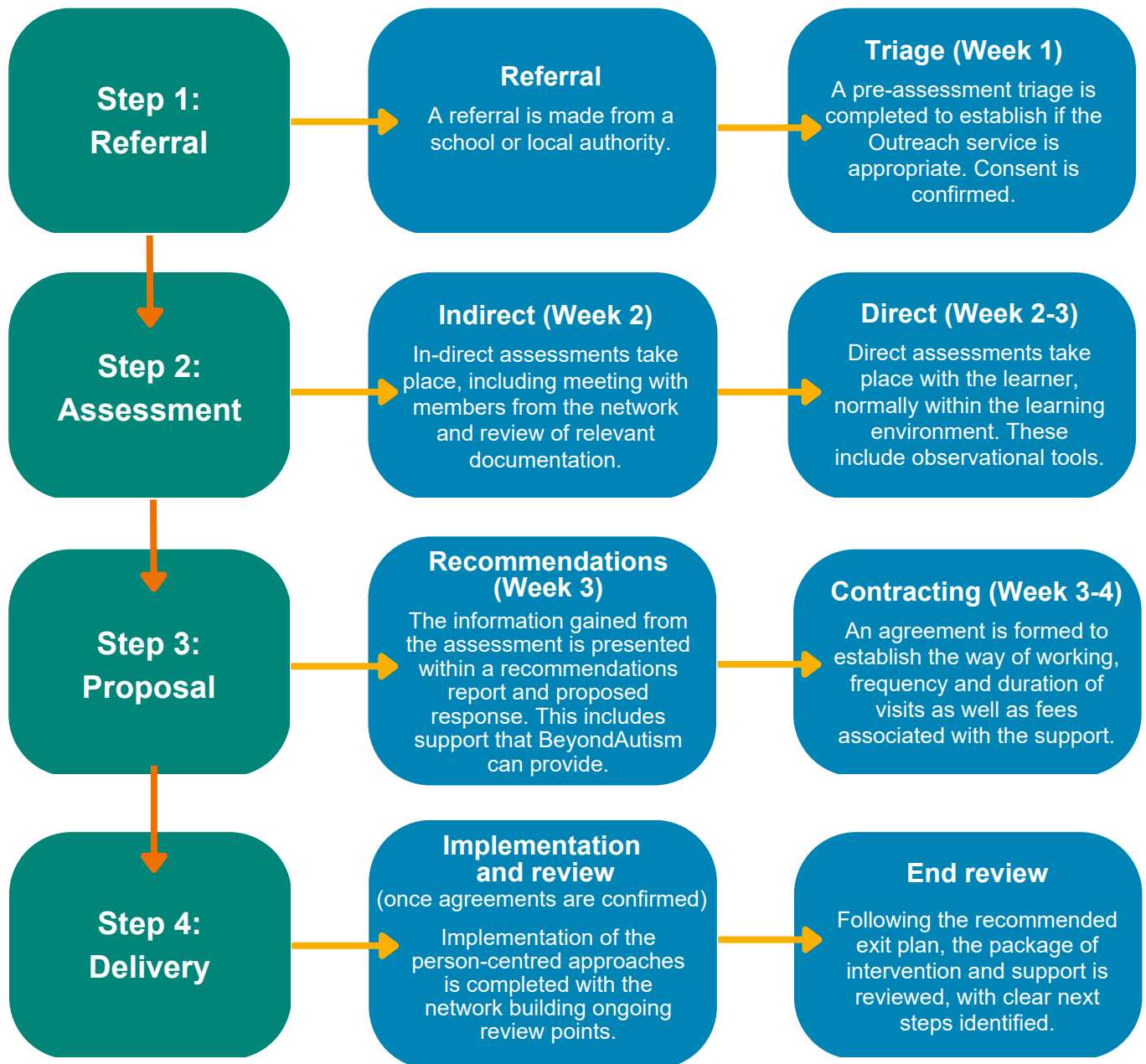


## Our process

The Outreach service is bespoke to each individual learner or environment and our processes for providing support adapt to this. Our step-by-step process ensures we are the right service to respond to the need, and then works methodologically through an assessment process. This then informs our response. Our impact is continuously tracked and reviewed, ensuring rapid progress is achieved.



To find out more about our Outreach service contact:

**David Anthony**

Head of Research & Learning

[davidanthony@beyondautism.org.uk](mailto:davidanthony@beyondautism.org.uk)